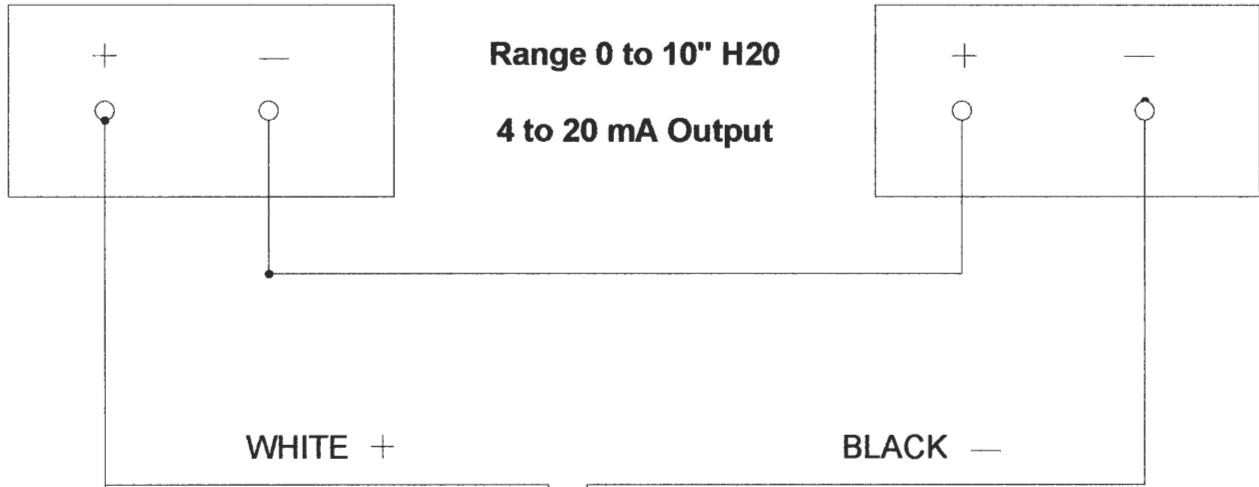


Installation Wiring

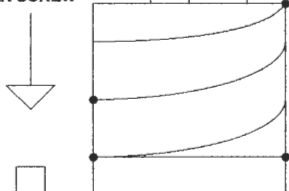
POWER SUPPLY

Pressure Transmitter

RECEIVER



ZERO FINE ADJUSTMENT POT UNDER SCREW



SHIELD/DRAIN



FOR MASTER BOOK

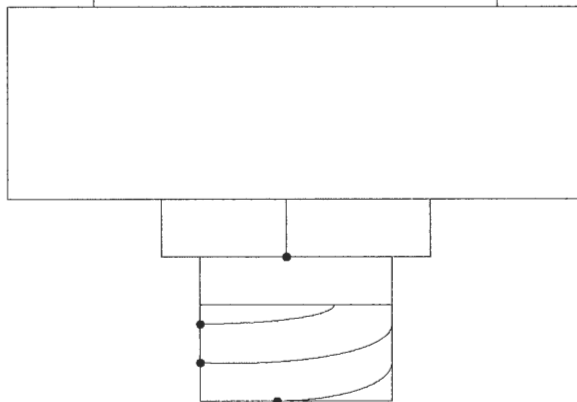
Range: 0 to 10" H₂O
Excitation: 9-28Vdc
Output: 4-20 mA
I.S.
Class 1, DIV. 1, Groups A, B, C, D, T3C
Non-Incendive
Class 1, Div. 2, Groups A, B, C, D, T3C
(Tamb. -50 to 120 Deg. C)
Entity Parameters: V_{max}=36 Vdc.
I_i=100mA_{dc}, C_i=24nF, L_i=2.7uH
CSA Contract: 207199
REF: GT2250

CAUTION

Power must be off while connections are made to wires

NOTE

In order to avoid ground loop conditions, there should be only one ground in the loop. The shield/drain can be used to provide optional noise rejection. Ground at controller end if required.



UMC Automation
(432) 686-1995
Part # 151795-.36